

Research News

August - October 2025

This report from the Centre for Applied Research and Innovation provides news of research projects undertaken with Building 4.0 CRC, the progress of the 'Care Economy' initiative, a continuation of research initiatives from the Faculty of Health Science, Community and Social Studies, a focus on individual researchers from across the Institute, guidelines for the submission of ethics applications, and news of forthcoming conferences.

Making impact

Holmesglen prides itself upon its approach to research. It seeks to develop a research focus that is industry orientated and has the potential to contribute to education and training to equip a workforce for an increasingly digitalised world.

In this section of the report, you will find information about our research projects and our research engagement with industry and community.

Vet, Applied Research and the Care Economy

In our last edition we heralded the arrival of Holmesglen's latest research initiative, the Applied Research and Innovation Care Economy project: a multi-stakeholder approach to applied research for the care economy involving TAFE, government, industry, and community.

In this issue we hear from the Care Economy project team and their initiative in establishing a **Community of Practice** to support the Care Economy initiative.

Inaugural Meeting of Applied Research and Innovation Community of Practice

The Applied Research and Innovation Project held its first Community of Practice meeting with the theme "Working with Industry and Community: What I Wish I Knew Before I Began" on Thursday 14 August 2025. Our three guest speakers provided highly interesting insights into their work with industry and community organisations and shared with us what they learnt in this process.

Attendees engaged in lively discussions, openly sharing both challenges and successes from their respective contexts. The atmosphere was collegial and constructive, creating a safe space for reflection, exchange, and mutual support.

Guest Speaker Highlight:

Robert Peoples from South West TAFE

Robert, our first guest speaker, shared the inspiring success story of his award-winning Mobile Skills Lab, which is addressing workforce challenges in rural Victoria. This innovative training solution—housed in a repurposed campervan—serves as a mobile aged care training facility, bringing high-quality education to learners who face barriers to accessing traditional training due to travel costs and geographic isolation.

holmesglen

The Centre for Applied Research and Innovation: its role and function

The Holmesglen Centre for Applied Research and Innovation acts as an important driver of Institute applied research and works in conjunction with researchers across the Institute. It focuses on outcomes-based research and innovation in partnerships and collaborations with other research organisations, industry, government, and community. Moreover, it provides a supportive environment for Holmesglen researchers across faculties and is an important complement to our teaching and learning programme.

In 2025 the Centre seeks to strengthen the institute's research profile and to consolidate Holmesglen's position as a leader in applied research. To do this we need to challenge further what research is and what it can be, to frame and promote a clear alternative to commonly accepted understandings, and to position ourselves as part of the research 'ecosystem'; an 'ecosystem' that focuses on outcomes-based research and innovation in partnerships and collaborations with other research organisations, industry, government, and community.

Education Methodology
Training Technology Theory
Applied New Researchers
Practice Community Research Academic
Knowledge Problems Basic
Projects Methods Solutions
Organisations



Dr Henry Pook,
Director, Centre for Applied
Research and Innovation.

The effectiveness of the mobile skills lab is rooted in strong industry partnerships. Robert has worked closely with sector stakeholders to co-design the facility, ensuring it meets real-world needs. This collaborative approach has led to remarkable outcomes, including a 1172% increase in traineeships and a growth in industry partnerships to 40 organizations.

Guest Speaker Highlight: Oksana Razoumova from Bendigo Kangan Institute

Oksana's presentation focused on embedding work-integrated learning within vocational English teacher training programs. Their approach to industry collaboration is multifaceted, encompassing activities such as organizing placements for teachers-to-be, co-designing professional development plans, and partnering on applied research initiatives.

They emphasised that successful collaborations in teacher training require both structural and interpersonal foundations. Key structural elements include ongoing support from industry peak bodies, the establishment of shared goals, and the allocation of essential resources such as time and funding. On the interpersonal side, they highlighted the importance of consistency and patience in building trust and mutual understanding as well as constructive communication to bridge cultural differences.

Guest Speaker Highlight: Samantha Noonan from the Gordon

Samantha shared the inspiring journey of establishing the Centre of Excellence in Disability Inclusion. This initiative is being co-designed by a diverse co-creation team comprising seven TAFE students with disabilities, alongside parents, industry professionals, and disability advocates. Their collaborative efforts are shaping not only the physical design of the Centre but also its foundational principles.

The co-creation process is focused on fostering an inclusive learning culture, developing accessible pathways to student success, and equipping industry partners to create inclusive and accessible workplaces. Samantha's presentation highlighted how meaningful engagement with stakeholders can ensure that the Centre reflects the lived experiences and aspirations of its community.

What I wish I knew before I began working with industry

Join the first Community of Practice for a dynamic get-together, open to all researchers across the Victorian TAFE network!

This is your chance to connect, share experiences, and workshop the key issues, and passions from your industry and community-engaged projects, offering invaluable peer-to-peer learning.

Discussion and insight

- Trends in applied research.
- Place-based research.
- Methodological challenges and tips.
- Co-creation with community.

Morning tea and refreshments will be provided. Please register to attend as limited places are available.

T: 03 9564 1786
E: appliedresearch@holmesglen.edu.au

Thursday 14 August 2025 10am - 12:30pm
Seminar Room 3, Holmesglen Chadstone Campus

Guest Speakers

Robert Peoples
South West TAFE

Samantha Noonan
The Gordon, Centre for Excellence in Disability and Inclusion

Oksana Razoumova
Bendigo Kangan Institute

ARI Community of Practice Meeting 1

10am - 12:30pm AEST, 14 August 2025
Seminar Room 3, Conference Centre, Building 1A, Holmesglen Chadstone Campus

10am
Welcome and introductions
Background to the CoP and discussion about the broad context of applied research in the care economy.

10.15 - 10.45am
Speaker: Robert Peoples (South West TAFE)
Robert will introduce the award-winning Mobile Skills Lab (MSL) and share insights into partnering with aged care facilities and trainees across regional and industry partners.

10.45 - 11.15am
Speaker: Oksana Razoumova (Bendigo Kangan Institute)
Oksana's work centres on embedding work-integrated learning and will share good practice related to how vocational practitioners can collaborate with industry partners in co-design to enhance the quality of teacher preparation.

11.15 - 11.45am
Morning Tea and Networking

11.45am - 12.15pm
Speaker: Samantha Noonan (Centre of Excellence in Disability Inclusion, The Gordon)
Samantha will share insights on the co-creation process and the lessons learnt from their work in supporting TAFEs to improve the student experience for people with disability.

12.15 - 12.30pm
Open Discussion and Closing Remarks
Discussion on the next theme, and agree on speakers and facilitators.

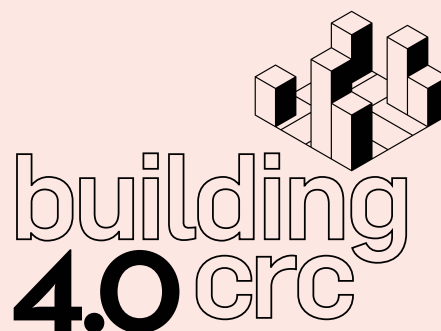
© Holmesglen Institute of TAFE, July 2025.
Holmesglen is the trading name of Holmesglen Institute of TAFE.
RPO: 0418, NID: 00012125, CRICOS Provider Code: 000125.
R2720725 Care Economy Practice CoP Meeting 1

A new dimension to industry-VET applied research.

What it means for VET.

Participation in this research partnership enables the TAFE Institute, along with industry, government, and university research partners, to work co-operatively on the development of new technologies and training programmes to modernise the building construction sector.

Building 4.0 CRC, established in early 2020, involves a partnership between Holmesglen and an industry-university based consortium to create, through research, an innovation 'ecosystem' in building construction. Holmesglen has been working with university researchers and its partner organisations to develop research programs that will support the development of training programs in the use of new technologies (including digital technologies); innovations to work processes; and policy and regulations improvement.



Research Updates

Project #49

Implications of Industry 4.0 technologies on Work Practices

Work on this project continues apace. Its aim is to understand the implications of emerging technologies on work practices, workforce training and working conditions in the building and construction industry. The project seeks to identify the benefits and challenges of emerging technologies, the impacts of these technologies on workplace practices and working conditions, the requirements for the choice and design of appropriate workplace technologies **and the requirements for future workforce training.** The project outcomes will provide insights and guidelines to inform the choice, design and integration of technology that maximizes desirable work practices and improve productivity and working conditions in the building and construction sectors.

The objectives of this proposal are to:

- provide insights about the new and emerging technologies that are likely to be used in the building and construction industry and their likely impacts on future work practices and working conditions;
- use the insights to understand and plan for transition in new work practices arising from these technologies;
- **use the insights to understand impacts on skills and training, informing interventions to upskill the workforce, manage the risks of deskilling and acquiring retaining and transitioning skilled workers (my emphasis).**
- use the insights to understand impacts on working conditions and industrial relations, identifying opportunities for emerging technologies to both enhance productivity and working conditions.

Project #58

B4.0CRC Shared Interest Project Programme: The Retrofit Housing Atlas: Adaptive Reuse of Housing in Australia

Project Duration: March 2025-26

Structured Engagement +

Input from CRC partners

- **Project Introduction - April**
- **Project workshop: May (remote)**
- **Project workshop: July (in person)**

A Shared Interest Project (SIP) is a Building 4.0 CRC (the CRC) Research Project that focuses on an issue of collective concern to which no single industry or research partner can or should tackle single-handedly and allows the CRC to diversify its research profile with projects that fill in the gaps other research does not cover.

SIPs can be taken from inception to active project status quickly; and importantly, these projects complement traditional CRC projects by focusing upon social, cultural, regulatory, or systemic matters and complex problems that are best addressed through the collective agency of the CRC consortium.

SIPs align directly with the CRC's four meta-themes:

1. People, Practices and Culture
2. Sustainability
3. Digitalisation, and
4. Industrialisation.

CRC 58 Industry Partner Engagement Workshop 3

Education and Training

25 July 10 - 11:00am. Online

Attending:

- Master Builders Victoria
- Corrie Williams
- Phil Alviano
- Holmesglen Institute
- Henry Pook
- Monash University Team: Nigel Bertram, Rebecca Roke

The Retrofit Housing Atlas project documents the typology, frequency and concentration of common Australian housing stock (1940s-2010s) and demonstrates systematic and scalar retrofit strategies for their densification, diversification and adaptation to 21st century social and environmental priorities. It includes:

1. Description of common Australian house types in 8 Australian capital cities - Adelaide, Brisbane, Canberra, Darwin, Hobart, Melbourne, Perth and Sydney - with potential for retrofitting and adaptation for measured densification and better social and environmental performance. These will be illustrated through representative case studies of each common housing type. Urban mapping of the identified house types will illustrate their concentration and frequency through maps at precinct, suburb and metropolitan scale.
2. Strategies for adaptations and retrofitting of the identified house types. These will be illustrated through design concepts.

There is great potential for this SIP to align with work done previously on SIP#48: the Circular Economy

Project #80

Insolvency in Construction

The research explores the causes of high insolvency rates in the residential construction sector (see graph below), addressing concerns about financial risk management as well as policy and regulation impacts. The focus is on reducing the broader economic and other impacts of residential building company failures, by triangulating insolvency data, sector systems and the educational environment to identify key focal points for reform.

The final report's insights and recommendations (when complete end September 2025) will provide regulators, industry and educators evidence-based guidance in designing reforms, preventative measures and educational supports to enhance the robustness of the sector and bolster its role in housing affordability

The B4.0 CRC Final Milestone Review has been completed: we now await the completion of the final report with recommendations

Project #90

Evaluation of the effectiveness of roofing work inspection using Remotely Piloted Aircraft Systems (RPAS)



RPAS inspecting roof at Berwick

Aim: evaluation of the effectiveness of remotely piloted

aircraft systems and 3D mapping techniques for the inspection of roofing work to support or enhance conventional in-person inspections.

The Problem: non-compliant roofing work is a key contributor to water ingress in residential homes. This project, focussing on newly completed homes, aims to research the effectiveness of using emerging technologies (in this case 'drones') to strengthen on-site inspections of roofing work. Work completed to date:

- **Phase 1 Information Synthesis:** assessment of advanced imaging methods and interviews with experts.
- **Phase 2 RPAS for roofing work inspection is now underway:** case studies and stakeholder surveys

The first case study was undertaken at a site in Berwick (newly completed 2 storey townhouse) on 1 April: this comprised an experiment to assess 3 inspections of the same roof.

The second case study was undertaken at Clyde North Wednesday 28 May 2025

- Single-storey, metal roof, eaves gutter
- Three stages
- Conventional inspection
- Eye-in-the-sky inspection
- Data collection for 3D modelling
- Single-storey, metal roof, eaves gutter
- Three stages:
 1. Conventional inspection
 2. Eye-in-the-sky inspection
 3. Data collection for 3D modelling

Three-stage inspection procedure:

- Inspector A conducts the roof inspection in the conventional way
- Using a camera drone as 'eye-in-the-sky', Inspector B conducts an independent roof inspection of the same site
- Using a camera drone, imagery data will be collected and post processed to generate a 3D model of the roof for a third inspection.
- Findings will then be evaluated, reviewing questions such as:
- Is a technology-assisted inspection of roofing work more thorough, accurate and effective than a conventional 'in-person' inspection?
- To what degree could these emerging technologies enhance a conventional 'in-person' inspection of roofing work?



Research Project Outcomes

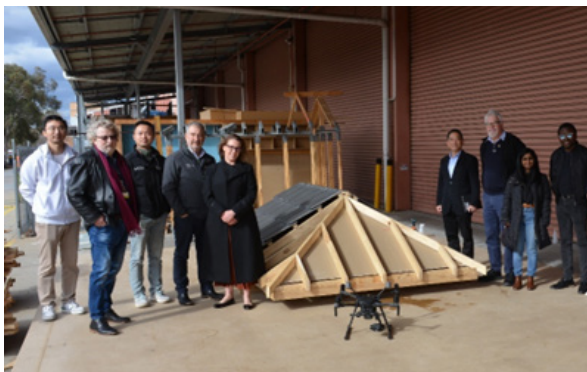
Once the research has been completed, some of the outcomes will be:

- training workshops for industry partners, practitioners, and **trainers/educators** to facilitate the implementation of project outcomes in practical settings.
- **recommendations and guidelines for the development of training courses for education and training of inspectors and other relevant stakeholders including trades personnel and construction managers (diploma level or degree level programmes).**

Project #90

Case Study 3 of Building 4.0 CRC Holmesglen 28 August 2025

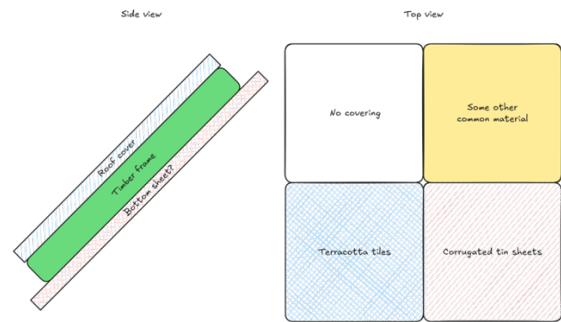
The project team, including Holmesglen, is planning to evaluate thermal imaging to detect moisture-related anomalies on building roofs. Before the researchers conduct the experiment on a real building roof, they wanted to test the capabilities of thermal camera in a controlled environment. Holmesglen offered its facilities as a test bed for the creation of mock up roof structures using common types of timber frames and roof sheets on which we can induce different levels of moisture were tested. These were being prepared by our Carpentry Staff (Matthew Berriman and Craig Gambetta) and tested on August 28.



The project team at Holmesglen: Representatives from the University of Melbourne, Monash University, Building and Plumbing Commission, Holmesglen Institute, Sumitomo Forestry, Master Builders Association Victoria.

The structure design

1. The structure was constructed in three layers, with the timber frame in the middle and the roof covering on top.
A bottom layer/sheet was needed so that water can be held in the middle and wet timber simulated.
2. The main idea was to **test whether the timber frame and different roof covering materials show thermal signs to the infrared camera**. It is necessary to test different roof coverings on this structure made with **common materials used for residential houses**. E.g., metal sheets and tiles. **A section without any cover was also specified so that the thermal camera could be used directly on the timber.**



The completed structure



Thermal signs on the infrared camera



The RPAS with infrared camera attached

Project #111

Modern methods of construction (MMC) and VET: a Holmesglen initiated project to meet the training challenges of the digital era.

Recognising the need for a more comprehensive and integrated VET approach to support the adoption of diverse MMC practices, as revealed by the limited scope of current qualifications, this project aims to develop a purpose-driven VET qualifications system/training framework for the construction industry and supply chain, including a wide range of MMC approaches (e.g., offsite/prefab/modular construction/advanced building materials). It also research the practicality of a 'simulation-based training centre that would provide an interactive means of training, applying, and practising stages in the planning, design, and construction skills of MMC.

There are five phases in the project structure: Phase 1 MMC international and national background; Phase 2 MMC Industry skills and training needs; Phase 3 MMC Competency framework development; Phase 4 MMC-related VET qualification structure; and Phase 5 practical application and live testing of MMC VET Resources.

Phases completed or in progress (see below)

PHASE 1:

MMC International and national background

Phase 1 includes a targeted review of Australian built environment VET qualifications. This will be complemented by a comparative analysis of international MMC-related programs and qualifications to identify best practices and inform the project's strategic direction.

PHASE 2:

MMC Industry skills and training needs

Phase 2 will explore industry skill and training requirements through in-depth case studies of construction companies and manufacturers actively implementing MMC. In this phase, engagement with educational providers will also occur to explore emerging training demands and challenges related to current training practices. This will also gather the needs and challenges of VET trainers and educators.

PHASE 3:

MMC Competency framework development

Phase 3 will leverage the background study and experts' consultations to develop a draft competency framework. This framework will be validated through industry workshops and feedback sessions.

Another Holmesglen Research Initiative

Project #117

Graduate Certificate in Sustainable Building

This proposal, currently being prepared by B4.0 CRC for sign off, is near to completion.

Addressing the sustainability challenges within the building and construction industry necessitates a fundamental transformation in how buildings are conceived, designed, and constructed, spanning every step from initial planning to completion. This project directly responds to the need for a workforce equipped with essential knowledge, skills, and capabilities to navigate and build resilience in a climate-affected world through targeted education and training.

The aim is to develop a Graduate Certificate in Sustainable Building. This post-graduate qualification will provide a high-level, targeted course of study, offering advanced knowledge and practical application skills crucial for accelerating Australia's transition towards low-carbon, circular, and more sustainable building practices

Research Initiatives

Faculty of Health Science, Community and Social Studies

The Faculty of Health Science, Community and Social Studies have a range of innovative projects focused around improving teaching and learning. The faculty is excited to share these projects and look forward to expanding their application.

Using educational escape rooms to develop transferrable skills

Kim Kenwell, Harrison Burgin

- **Background:** This project shows that the use of escape rooms in education can engage students, and provide highly memorable and interactive learning experiences. The series of puzzles can be designed concurrently, or sequentially to maximise student engagement, depending on the goals of the escape room. The findings from this research project are currently being written up, with the aim of publishing soon.
- **Result:** Escape rooms are highly valuable ways of engaging learners, and can lead to the development of transferable skills such as communication, time management and problem solving.
- **Dissemination:** We also presented these at the Australasian Simulation Congress 2025 in Adelaide and many new connections were made from this experience.



Harrison Burgin presents his research on escape rooms to the Australasian Simulation Congress 2025.

Sustainable practices in healthcare: reuse, repurpose and recycling in healthcare

Michelle McAlister, Janet Connor, Rachael Allen, Mika Musgrave-Takeda, Harrison Burgin

- **Background:** The sustainability forum is an introduction for student nurses from the Bachelor of Nursing (Third Year) and Diploma of Nursing (Stage 4) programs to explore and implement sustainable practices within clinical healthcare environments.
- **Aim:** This one-day forum aimed to educate student nurses on sustainability practices, including how they can integrate sustainable principles into their professional environments. The aim of this initiative is to equip future nursing professionals with the knowledge, skills, and commitment to integrate sustainability into healthcare settings. This research seeks to understand if a sustainability forum improves student nurses' awareness of sustainability principles and practices in healthcare.

Using forum theatres to foster empathy and improve communication

Kim Kenwell, Ian Balducci, Gabby Koutoukidis, Harrison Burgin

- **Background:** A forum theatre is an acting based teaching method in which 'worst case' scenarios are played out by actors, and lets students re-write the script for the scenario, line-by-line, until a perfect scenario is reached. These forum theatres have been shown to improve empathy and communication in healthcare settings internationally.
- **Result:** This project shows that this learning method is highly valued by students, improving their empathy and understanding of all the complex factors that contribute to patient interactions. Students enjoy this type of learning and hope for more of it in future.

Building resilient students through mindfulness workshops

Tammy Casselson, Harrison Burgin, Gabby Koutoukidis

- **Background:** Student resilience is essential, especially in the healthcare professions. This project seeks to improve the resilience of students as they prepare to enter the workforce, by delivering a series of mindfulness workshops. This compares a traditional delivery of a mindfulness workshop to an innovative approach – embedding mindfulness within the curriculum.
- **Result:** The preliminary data from this research suggests that there is no significant difference on student resilience when comparing between students who received a one-off mindfulness workshop and those who received mindfulness workshops embedded within the curriculum. While we are seeing that placement supervisors are noting an improvement in overall behaviour and wellbeing in this cohort compared to previous cohorts, we are unable to tie this directly to mindfulness.
- **Dissemination:** We will be finalising these results shortly and will be seeking to publish these in a peer-reviewed journal.

Research in Progress

Cedomir Gladovic

Cedomir has had his research article 'Bridging the Digital Divide: Co-Creating Australia's Future Construction Workforce' has been accepted for publication in Industry and Higher Education. This article analyses the critical gap between Australian construction education and industry digital requirements, proposing evidence-based collaborative frameworks to develop workforce capabilities.

Akrati Jain

(Course Leader and Lecturer in Bachelor of Information Systems)

Akrati's paper will be included in the ASEFINnoLab6 Conference in Shanghai, China from 13-18 October 2025. The work has focused on inclusive AI guidelines for disabled learners. The invitation from the Asia-Europe Foundation (ASEF) reads:

Given your team's outstanding initial output and your level of engagement and dedication throughout the virtual programme, it is my pleasure to invite you to join us in the ASEFINnoLab6 Conference to be held on 14-17 October 2025 at Fudan University in Shanghai, China with the theme "Universities' Role in Developing Skills for an AI-Powered Future".

Sakshi Kaushal

In our last report I mentioned an innovative research project being planned by Ms Sakshi Kaushal.

Now her abstract has been accepted for presentation in the proceedings of the forthcoming Australian and New Zealand Student Services Association (ANZSSA) Conference in New Zealand.

Her contribution, titled More Than Just Counselling: Evolving Mental Health Support in Higher Education, focuses on the sharing of "...lived practitioner insights ... (and the exploration of) emerging models of counselling service delivery that reflect the changing demographics and stressors of our student communities"

It is an outstanding compliment to one of our researchers and counsellors.

Success such as this also supports the institute's research profile in the broad field of mental health and the concomitant issues faced by learners across all institutional types in navigating what has become an increasingly stressful learning environment.

Ms Sakshi Kaushal



International Specialised Skills Institute

The International Specialised Skills Institute newsletter

Welcome to the August edition of the ISS Institute Newsletter!

We have officially closed Round 2 of the International VET Practitioner Fellowship and we would like to say thank you to all applicants. We sincerely appreciate the time, effort and passion that went into each application.

We appreciate everyone's patience while we undergo the review and selection process and look forward to announcing our new Fellows in due course!

Our Fellows have been busy throughout their travels and we are excited to share the latest updates on what they have been up to! See below to learn more about their research and our upcoming events.



Upcoming Alumni Event

Our annual Fellow Alumni catch up has rolled back around. Join us for an exciting evening with great opportunities to mingle, and reunite with our past and current fellows. More information about the event below!

New Fellowship reports

Two new Fellowship reports have been published on our website by Joshua Searle and Ross Digby. See below for links and to read more about their innovative work.

Indigenous goldsmithing and ceramic sculptural practices in Colombia. By Joshua Searle, 2024 Mason Family Trust Fellow

Joshua Searle's Mason Family Trust Fellowship report documents a research journey through Colombia investigating Indigenous goldsmithing and ceramic sculptural practices. Visiting major museums, archaeological sites, and artisans, Searle examined thousands of Pre-Columbian objects, focusing on their cultural significance, craftsmanship, and symbolism

Mega project education and training collaboration By Ross Digby, 2023 International VET Practitioner Fellow

The report explores strategies for delivering accredited and bespoke training to support Victoria's mega infrastructure projects under the Big Build initiative. It highlights the importance of aligning training with project phases and collaborating closely with lead contractors.

Focus on the researcher



In a previous research report I emphasised the need to broaden participation in research to include students, teachers, and 'early researchers', as an important step in strengthening research and embedding it into the very fabric of education and training at Holmesglen. This section of the report focuses on a sample of the research being planned or undertaken, either internally or externally, by institute researchers.

Developing and Improving Sustainable Upholstery Training in Victoria: Candace Van Der Krogt

Candace's fellowship focuses on teaching sustainable methods in the upholstery industry, training the next generation of Upholsterers with environmentally conscious materials, and reviving the expert craftsmanship and skills involved in traditional upholstery.

Candace recently attended training in England to learn traditional methods and to explore the sustainable materials for upholstery that are currently being used in Europe and has provided an **interim** report on her research.

"I learnt so much about the craft involved in English upholstery from both Gareth Rees of the British School of Upholstery and Alex Law of the School of Upholstery. Both focused on springing techniques with me and we practiced different ways of making a seat comfortable.

Most people do not realise what is involved in making their furniture comfortable and yet we sit on upholstery all our lives. In the car, on a motorbike, on a train, in the office, in our homes, when we sleep. It is all upholstery. Making

the structure comfortable and long lasting looks different in many countries. We discussed and explored techniques used in Scandinavia, Germany, France, England, America and Australia. Scandinavian upholsterers are leading experts in using natural and sustainable materials combined with advanced springing techniques, to create the same level of comfort that petroleum-based products can currently achieve.

I researched natural materials with Delyth Fetherstone-Dilke, a leading expert in sustainable upholstery. We restored a modern IKEA chair using only natural materials and the results were thought provoking. The comfort levels achieved with these techniques and the ability to reduce the toxicity to our home environments and our planet by using these materials that are sustainable and a natural waste product, was undeniable. We also had a meeting with a representative of Mitchell Wool, the largest wool processing company in Australia. We talked about the untapped resource of wool that is not used in Australia for textile manufacture as it is not as fine as it needs to be for those processes. It is, however, very useful in upholstery and needs to be explored further. If we can find a way to use waste products as upholstery materials, we will greatly reduce the impact on our planet."

Candace will then apply this research in Australia and, through the upholstery teaching program at Holmesglen and working closely with industry leaders in Victoria, these methods and materials will be explored, used and implemented, creating a more sustainable and beautiful future for the furniture industry.

ASPIRE CONFERENCE 2025

LEARNING THROUGH APPLIED RESEARCH: Developing a Framework for Future Learning.

It was a decade ago that Holmesglen commissioned its strategy paper on applied research (Strategic Directions for Applied Research and Innovation at Holmesglen Institute: Recommendations for Implementation, 2015.), containing an explicit reference to the need for student-based research, a theme that has been taken further by the Institute's strategy plan: 'STRATEGY 2026'

Strategic Directions for Applied Research and Innovation at Holmesglen Institute: Recommendations for Implementation, 2015

"... the role of students as researchers and innovators is an essential component of the learning process ..."

'STRATEGY 2026', Goal 3 'Future Ready'

'Jobs and skills will continue to transform and evolve, as the pace of change in the world of work accelerates. This goal builds on our core strengths in applied, hands on learning and applied research, so our learners and industry partners are primed for success and can adapt to a continually changing and increasingly complex world.'

In those 10 years a rich and expansive applied research profile has developed covering health, building construction, business, hospitality management, fashion, the environment, information systems, early childhood education, English language programmes, mindfulness, and emotional intelligence.

Although applied research is now firmly embedded in the Institute's 'eco system', one area that has not always been given the attention it deserves is the participation of learners in the 'cycle of applied research': this interactive workshop aims to be a first step in correcting this.

The ASPIRE workshop focused on the 'learner as researcher'.

The workshop had, as its primary objective, the development of a framework for learner-focussed research.

Why learner-based research? The Centre argues that, by placing research at the forefront of teaching and learning, learners will benefit from the development of a research-driven 'mindset', embodying analytical and critical thinking skills, as well as developing the capacity to deal with new knowledge and adapt their skills in a workforce facing an uncertain and technologically driven future.

A revolution in construction technologies...

Will require the reshaping of industry training and education to meet the challenges of industry modernisation in the 'digital age'.

... the Institute hopes to develop vocational education and training programmes to build a workforce with the skills and knowledge needed to meet the demands of the digital age.' [2002]

(Learning through applied research: presented by Dr Henry Pook)

Learner-based applied research...What can it add?

'Future proofing the workforce'

Enhances technical knowledge:

- Develops understanding of innovations to work processes and product development that may be applied 'on the job'
- Supports problem solving in the workplace- development and application of innovative solutions to industry problems
- Develops ability to work autonomously, as well as in a team, and
- Improves communication and planning skills.



AMBITION



SCHOLARSHIP



PASSION



INTEGRITY



RESPECT



EXCELLENCE

Diary Dates 2025

CONFERENCES

Note: Staff should consult with their department head/co-ordinator prior to registering for conferences. Please note that the Centre for Applied Research and Innovation does not fund registrations.

International Specialist Skills Institute Research Conference 2025

This year, Holmesglen is proud to host the International Specialist Skills Institute Research Conference on behalf of AVETRA and OctoberVET.

This annual event showcases the work of research fellows who have undertaken international practitioner research projects. It's a fantastic opportunity to see the breadth and impact of these projects, and to learn how you can get involved.

The ISS Institute Fellowships are designed to support staff who are new to research. They provide funding for small-scale, entry-level projects conducted overseas, with the goal of bringing valuable skills and knowledge back to Australia.

At the conference, you'll be able to:

- Explore the scope and scale of past fellowship projects
- Gain insights into the application process
- Connect with current and past fellows

We encourage all staff interested in professional development and research to register for this free PD event and attend. It's a great way to get inspired and take the first step toward your own research journey. A registration link is provided here and in the poster link.

**For further information please contact Dr. Warren Guest:
E: warren.guest@holmesglen.edu.au**

VELG

The 2025 National VET Conference will be delivered over two days on the 30 and 31 October 2025 at the Gold Coast Convention and Exhibition Centre. It will include an exciting range of presentations, providing attendees with the opportunity to engage in a wide variety of plenary and elective sessions.

See Velg Training: www.velgtraining.com

ASCILITE 2025

30 November - 3 December 2025.

Adelaide

For more information: <https://ascilite.org/about-ascilite/E>

Conference theme: 'Future-Focused: Educating in an Era of Continuous Change'

This year's theme explores the dynamic landscape of education, emphasising adaptability, innovation, sustainability, and forward-thinking approaches to prepare learners and educators for an ever-evolving digital world.

Sub-themes: Collaborative Futures; Adaptable Learners; Inclusive Futures
AI and Human Synergy; Your Journey.

TDA Convention 2026 Power of TAFE

5 - 7 May 2026

Brisbane Convention and Exhibition Centre.

The TDA Convention 2026 - Power of TAFE, is a significant national conference celebrating the strength, innovation and impact of TAFE in Australia's education and training landscape.

Note that the call for proposals opens 1 July 2025 and close 30 September 2025

2025 OCTOBERVET

"Sharing knowledge and enhancing VET through international insights"

Date: Tuesday 21st October, 9:30am - 3:00pm

In-person event

Holmesglen Institute, Chadstone Campus
Corner Batesford & Warrigal Rd, Chadstone
VIC 3148

[Click here to register now](#)



Research ethics and compliance: Information for researchers

- When is ethics approval needed?
- Is ethics approval always needed?
- How do I obtain ethics approval?
- Where do I obtain human ethics application forms?
- Preparing a human research ethics application: general pointers

See webpage for answers to these questions: [Information for researchers](#)

PANEL DATES for 2025

Researchers are encouraged to submit applications two weeks prior to the meeting dates scheduled below:

1. Thursday 27 February 2025, 2-3:30pm
2. Thursday 17 April 2025, 2-3:30pm
3. Thursday 12 June 2025, 2-3:30pm
4. Thursday 14 August 2025, 2-3:30pm
5. Thursday 9 October 2025, 2-3:30pm
6. Thursday 4 December 2025, 2-3:30pm

If you are keen to know more, please contact:
The Centre for Applied Research and Innovation
E: appliedresearch@holmesglen.edu.au

Research Support

APPLIED RESEARCH and INNOVATION: a call to researchers, both old and new

What is applied research? Where do I start with a research project? How do I define a research project: topic, question, problem? What sources are needed? Where do I find them?

The Holmesglen Centre for Applied Research and Innovation is on hand to provide some preliminary advice with your research and assist with an exploration of the issues surrounding questions such as these.

If you are keen to know more, please contact: The Centre for Applied Research and Innovation

E: appliedresearch@holmesglen.edu.au



In the spirit of reconciliation, Holmesglen recognises and celebrates the Traditional Owners of the lands throughout Victoria and beyond on which we educate and train. We pay our respects to Elders past and present and acknowledge our emerging leaders.

Contact us

For business and the community sector we are on hand to examine the potential benefits of partnering with Holmesglen and to evaluate how this would assist in improving the competitiveness, productivity, efficiencies, and/or commercial outcomes of your company or organisation.

If you are keen to know more about Holmesglen research and how it can help your business, education provider or community organisation please contact:

Dr Henry Pook, Director
E: henry.pook@holmesglen.edu.au

The Holmesglen Centre for Applied Research and Innovation
Building 7, Room 2.05,
Chadstone Campus, Holmesglen Institute
E: appliedresearch@holmesglen.edu.au
T: 61 3 9564 1886
W: holmesglen.edu.au/About-Us/Applied-Research-and-Innovation
© Holmesglen Institute 2025